

■ Movotec® Drives > Folding Hand Cranks (small and large)

Can be mounted "right-at-hand," yet folds completely out of the way when not in use. The small crank has a 100 mm radius and is intended for lifting light to medium weight loads. The large crank has a 130 mm radius and is designed to lift larger loads with less effort.

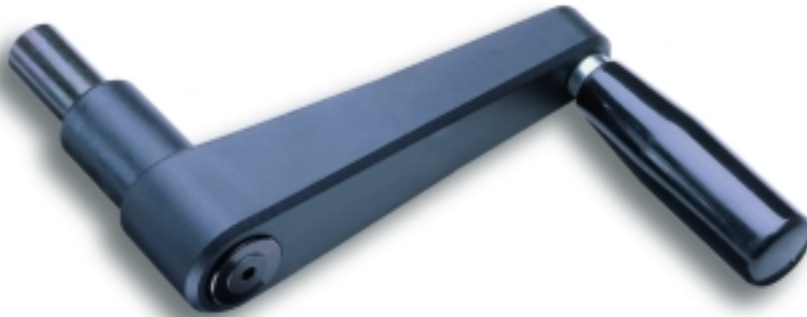
Technical Data

- Materials: nylon handle with spring-loaded steel locking mechanism
- Operating temperature range: 32° F (0° C) to 115° F (46° C)

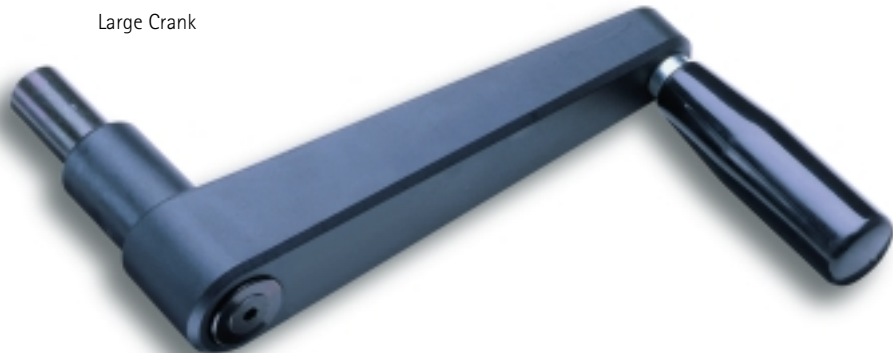
Product Note

Large folding cranks are also available in a corrosion-resistant version for application in environments subjected to periodic wash-down. Please contact your SUSPA sales representative for additional information.

Small Crank



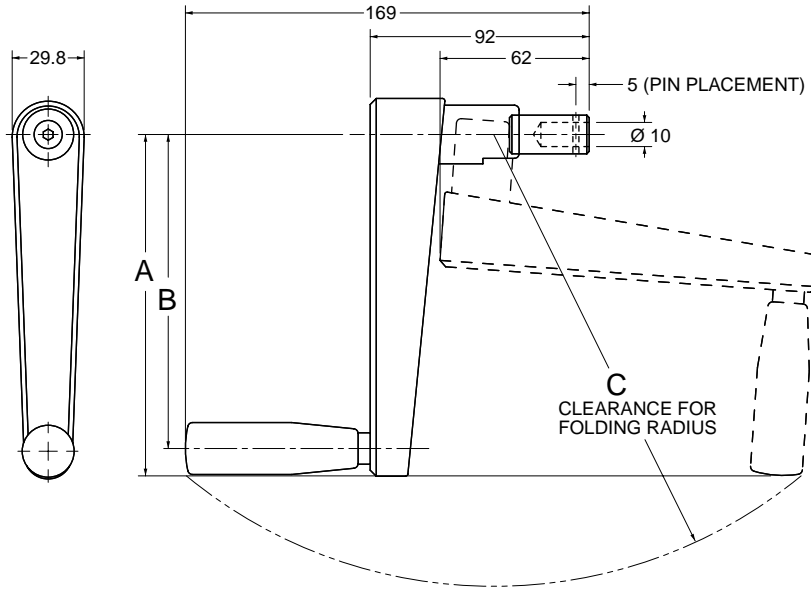
Large Crank



Folding Hand Cranks

Dimension Chart: Standard

Description	Model Number	A (mm)	B (mm)	C (mm)
Small Crank	FC	138	100	170
Large Crank	FC1	142	130	200



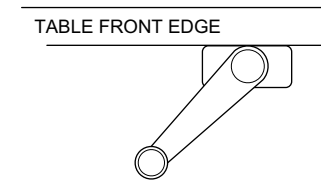
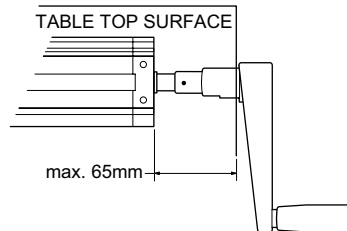
Operating Instructions for the Folding Hand Crank

The hand crank can be folded back and away from the user to nearly disappear under the top of the work surface.

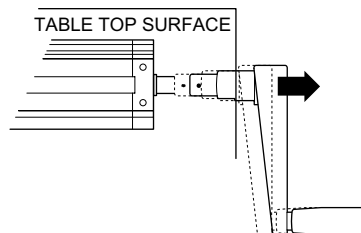
Top View

Front View

Hand crank in operational position



Hand crank must be pulled to a stop in the direction of its axis



Hand crank can then be folded under the worksurface top

